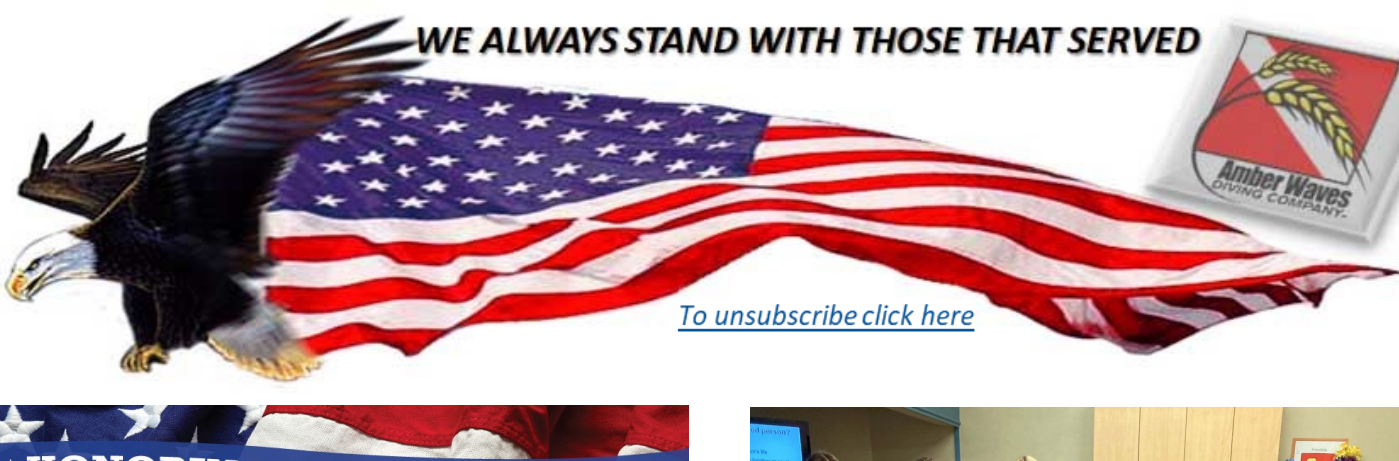
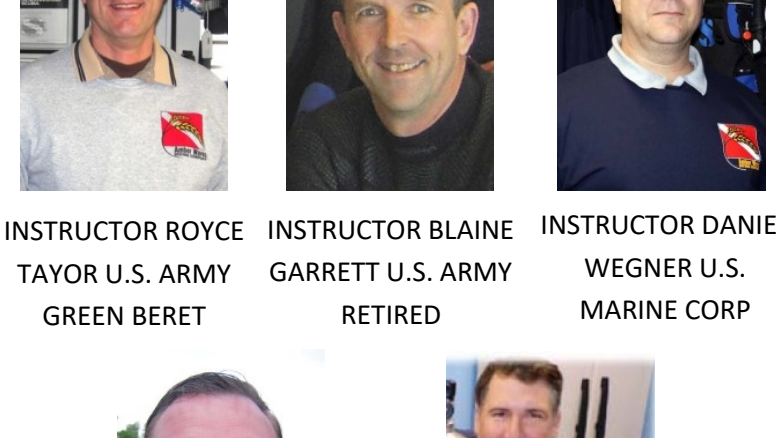


WE ALWAYS STAND WITH THOSE THAT SERVED

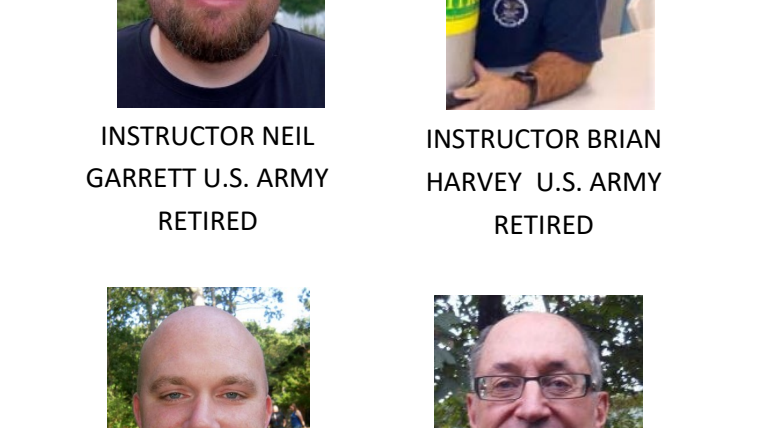


To unsubscribe click here

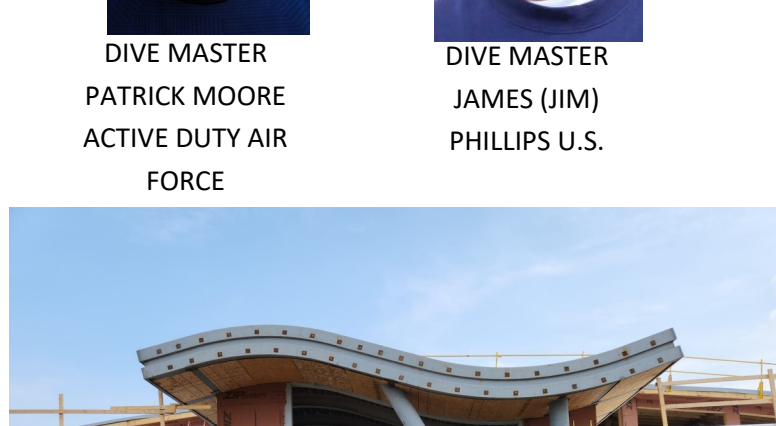
**HONORING OUR VETERANS**  
Thank You for Your Service!



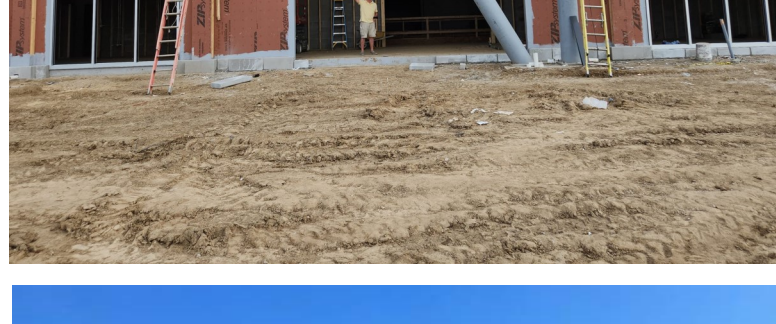
INSTRUCTOR ROYCE TAYOR U.S. ARMY GREEN BERET  
INSTRUCTOR BLAINE GARRETT U.S. ARMY RETIRED  
INSTRUCTOR DANIEL WEGNER U.S. MARINE CORP



INSTRUCTOR NEIL GARRETT U.S. ARMY RETIRED  
INSTRUCTOR BRIAN HARVEY U.S. ARMY RETIRED



DIVE MASTER PATRICK MOORE ACTIVE DUTY AIR FORCE  
DIVE MASTER JAMES (JIM) PHILLIPS U.S.



AND SO IT BEGINS, OUR LEAST FAVORITE PART.



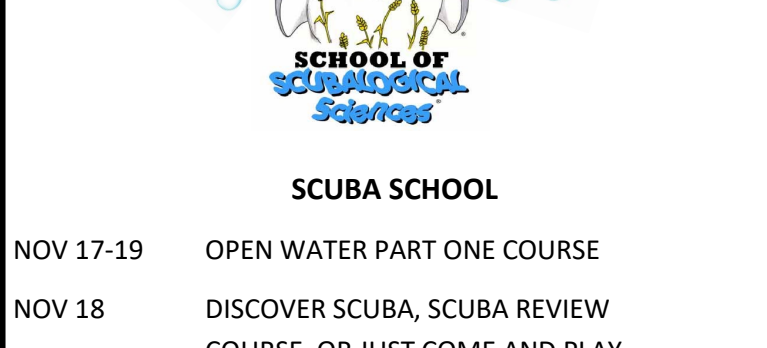
TUESDAY NIGHT FIRST AID TRAINING AT PRIMROSE SCHOOL OF WICHITA. DEFINITELY A FUN GROUP OF PROFESSIONALS.



FRIDAY MORNING FIRST AID TRAINING AT ELK RIVER WINDFARM.



OUR SUNDAY FIRST AID GRADUATES PICTURED ABOVE.



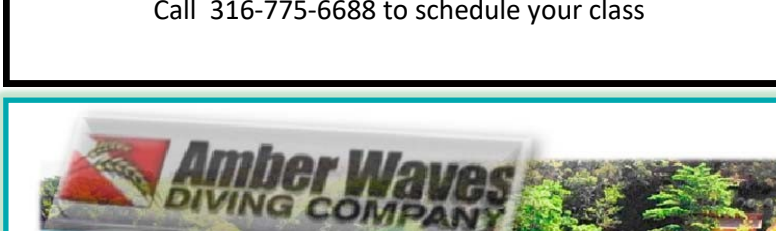
**SCUBA SCHOOL**

NOV 17-19	OPEN WATER PART ONE COURSE
NOV 18	DISCOVER SCUBA, SCUBA REVIEW COURSE, OR JUST COME AND PLAY
NOV 19	FIRST AID TRAINING
NOV 24-26	OPEN WATER PART ONE CLASS
NOV 25	DISCOVER SCUBA, SCUBA REVIEW COURSE, OR JUST COME AND PLAY
NOV 26	FIRST AID TRAINING
DEC 1-3	OPEN WATER PART ONE CLASS
DEC 2	DISCOVER SCUBA, SCUBA REVIEW COURSE, OR JUST COME AND PLAY
DEC 3	FIRST AID TRAINING
DEC 8-10	OPEN WATER PART ONE CLASS
DEC 9	DISCOVER SCUBA, SCUBA REVIEW COURSE, OR JUST COME AND PLAY
DEC 10	FIRST AID TRAINING
DEC 15-17	OPEN WATER PART ONE CLASS
DEC 16	DISCOVER SCUBA, SCUBA REVIEW COURSE, OR JUST COME AND PLAY
DEC 17	FIRST AID TRAINING
DEC 22-24	OPEN WATER PART ONE CLASS
DEC 23	DISCOVER SCUBA, SCUBA REVIEW COURSE, OR JUST COME AND PLAY
DEC 24	CLOSED-HOLIDAY

MAKE EVERY WEEKEND A DIVE WEEKEND

**Wichita CPR Training**  
Provided by Amber Waves Diving Company

WICHITACPRTRAINING Center can provide you training in Emergency First Responder, American Heart Association, American Safety and Health Institute, and the National Safety Council. Our Instructors have real world experience in providing first aid care and will provide you a 'real life' training experience. We also sell every brand of AEDs.



Call 316-775-6688 to schedule your class



TURQUOISE BAY RESORT FEBRUARY 17-24, 2024

DIVER-DBL	\$2,433.00
DIVER-SINGLE	\$2,592.00
NON-DIVER DBL	\$2,076.00
OCEAN VIEW UPGRAGE	\$207.00 PER ROOM PER WEEK

- Package Includes:**
- Round trip airfare from Wichita
  - 7 nights' accommodation at Turquoise Bay Resort
  - Round-trip airport/hotel transfers
  - 3 full meals daily
  - Non alcoholic beverages & local alcoholic beverages
  - 3 boat dive trips daily including tanks, weights & weight belt
  - Horseback ride
  - Botanical garden tour
  - Wifi
  - All hotel taxes and service charges

- Package Excludes:**
- Nitrox (\$119 + 19% tax for unlimited; if pre-paid)
  - Optional Chamber Fee of \$2.00 per person/day
  - Personal dive equipment transfers
  - Tips to the Dive Crew
  - Trip Cancellation or Interruption Insurance

PRICED AT CASH DISCOUNT \$500 DEPOSIT

**EQUIPMENT SPECIALIST DIVER**

PADI EQUIPMENT SPECIALTY COURSE...IS IT WORTH IT?

Don't miss a dive due to a scuba gear issue. Whether it's a blown O-ring, regulator problem, wetsuit tear or a broken fin strap, you can learn how to manage basic scuba equipment adjustments.

As a PADI Equipment Specialist, you are prepared for the basic scuba equipment maintenance, care and adjustments you'll encounter every day. In addition, you'll learn interesting background information about how your gear works, how it's repair and other information that helps you with your equipment investment.

Additionally, if you don't already have your PADI Advanced Certification, this course counts as one of your dives. More importantly this course counts toward a specialty needed for your Master Scuba Diver Certification.

PADI Equipment Specialty - How does it work?

To enroll in the PADI Equipment Specialty course in Bali, you must be a PADI Scuba Diver (or qualifying certification from another organization). No dives are required, so you can take the Equipment Specialist course any time of the year.

With the PADI equipment specialty course you will come to our dive center where our instructor will go through the following with you:

- Review the theory, principles and operation of scuba diving equipment
- Learn about routine, recommended care and maintenance procedures, and equipment storage
- How to overcome common problems with equipment and recommended professional maintenance procedures (may include a demonstration of repair procedures).
- Gain simple suggestions for comfortable equipment configurations and an introduction to new gear (may include optional confined water dive to try new or unfamiliar equipment).

PADI Equipment Specialty - Where will I dive?

The PADI Equipment Specialty course is a non-diving specialty course which means that there are no dives included in the course.

CALL TO SCHEDULE YOUR COURSE- 316-775-6688

**AQUALUNG HELIX PRO REGULATOR \$549.00**

This 2022 Aqualung presents us with the Helix, a mid-priced regulator, which enjoys very good performance, undoubtedly above expectations. It represents the DNA of the Aqualung regulators. It is without question the best option in terms of value for money currently available.

The Helix Pro version has two added features:

Aqualung's patented ACD system, technology that protects the first stage from accidental entry of water or dirt even when the regulator is not under pressure.

And sealed ambient pressure chamber, suitable for cold and/or polluted waters.

**SCUBAPRO MK19 EVO/G260 REGULATOR \$999.00**

THE MK19 EVO/G260 REGULATOR IS PERFECT FOR ANY CONDITIONS, ESPECIALLY THOSE WHO DIVE DEEP, IN COLD WATER, OR IN SILTY ENVIRONMENTS. THIS SYSTEM IS IDEAL FOR HARSH CONDITIONS, MAKING IT A TOP CHOICE FOR TECH DIVERS AND CAVE EXPLORERS. THE COMPACT MK19 EVO IS FULLY SEALED, ENSURING TROUBLE-FREE OPERATION IN COLD OR MURKY WATERS. THE G260 IS A HIGHLY IMITATED AIR-BALANCED SECOND STAGE WITH METAL COMPONENTS AND A LEFT-RIGHT HOSE ATTACHMENT OPTION, MAKING IT EXCELLENT FOR TECH DIVING SETUPS AND A CONSISTENT TOP PERFORMER.

**AQUALUNG Dive Computer i100 \$879.00**

The Aqualung i100 is the perfect dive computer for the new diver. With simple one-button navigation, you can select from four operating modes and manage two gases. The computer will also retain all your settings and calculations between battery changes. Safety features such as audible alarms and a high-visibility LED warning light are included. The i100 dive computer provides all the essential functionality you need, a compact design, and a great price.

**AQUALUNG Aqua Lung Leg3rd Regulator \$879.00**

EVERYTHING YOU'D EVER WANT IN A REGULATOR

**AMBER WAVES DIVING REPAIR CENTER**

Properly functioning gear is crucial. Your safety depends on it. That's why we are the best technicians in the business to service your gear.

We are certified technicians that always follow manufacturer guidelines. Conscientious and thorough, we examine every part of your gear. We're always on the lookout for wear and corrosion, immediately swapping out anything worn or damaged. We want your next dive to be your best dive!

**EXTEND YOUR DIVING TIME**

BECOME A PADI ENRICHED AIR DIVER ENRICHED AIR CLASS I

UST CALL AND SCHEDULE YOUR CLASS

**WHY DIVE NITROX?**

- Longer Bottom Times:** Recreational nitrox (21 - 40% oxygen) contains a lower percentage of nitrogen than air. The reduced percentage of nitrogen in recreational nitrox allows divers to extend their no-decompression limits (or dive time) by reducing nitrogen absorption - the less nitrogen there is in a diver's breathing gas, the slower his nitrogen absorption will be at a given depth. For example, according to the NOAA (National Oceanographic and Atmospheric Association) no-decompression dive tables, a diver using Nitrox 36 (or NOAA Nitrox II) may stay up to 50 minutes at 90 feet of sea water, while a diver using air may only stay a maximum of 30 minutes at this depth.

- Shorter Surface Intervals:** A diver using nitrox absorbs less nitrogen for a given depth than a diver using air. This means that the nitrox diver has less nitrogen to off-gas during a surface interval, which can shorten the required surface interval drastically. For example, a diver using Nitrox 32 (NOAA Nitrox I) can repeat a 50 minute dive to 60 feet after 41 minutes, while a diver using air must wait a minimum of 8 hours to repeat the same dive (using to NOAA's no decompression dive tables).

- Longer Repetitive Dive Times:** Nitrox becomes especially useful for divers who engage in more than one dive per day. A diver using nitrox will have a longer allowable bottom time on a repetitive dive than a diver using air because the diver using nitrox has absorbed less nitrogen. For example, after a dive to 70 feet for 30 minutes, a diver using Nitrox 32 can stay at 70 feet for a maximum of 24 minutes if he immediately reenters the water. However, a diver performing the same series of dives on air may only stay at 70 feet for 19 minutes on his second dive (according to NOAA's no decompression dive tables).

PICK UP YOUR CREW PACK AND SCHEDULE YOUR COURSE. 316-775-6688

**Scubapro MK11/C370 Regulator \$639.00**

The Mk11 First Stage Regulator is the perfect choice for the recreational diver who wants the advantage of a diaphragm first stage for use in temperate waters. Diaphragm-based first stages are environmentally sealed so that water cannot enter the inner mechanism. This first stage comes standard with the Thermal Insulating System (TIS), which keeps your first stage from freezing up and malfunctioning in cold water conditions. Additionally, its over-balanced diaphragm first stage design gives you better breathing performance at greater depths.

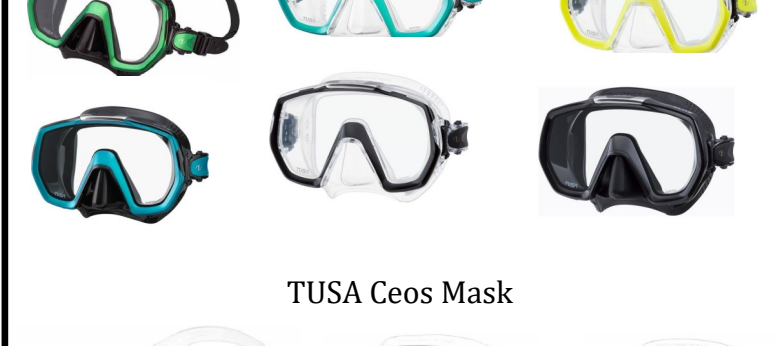
PRICED RIGHT AT \$639.00

**SHERWOOD SCUBA WISDOM 3 COMPUTER \$825**

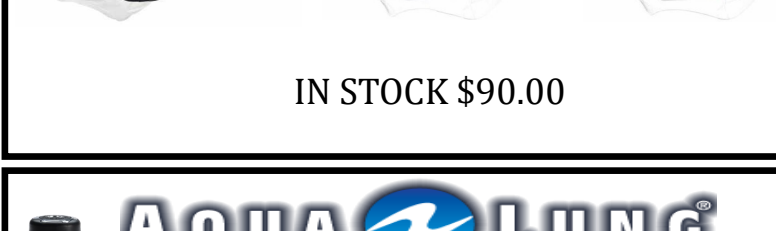
The new Wisdom 3 is an intuitive easy to use and operate with easy to read large digital display.

RETAIL \$945 ...OUR PRICE \$825

**TUSA Freedom Elite Mask \$90.00**

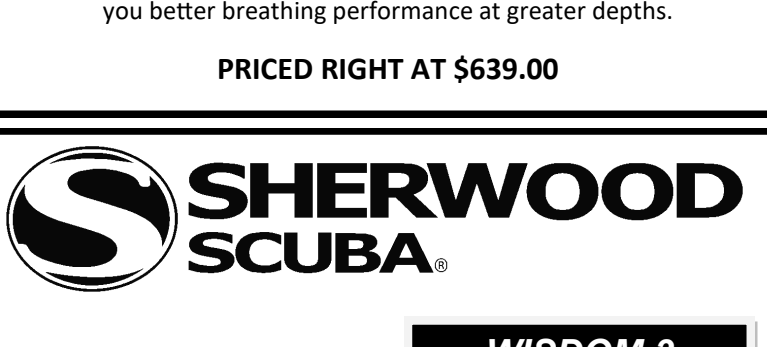


TUSA Ceos Mask



IN STOCK \$90.00

**TUSA Solla Fins \$139.00**



IN STOCK \$139.00

**SCUBAPRO NEED A PURGE MASK HERE THEY ARE**

